

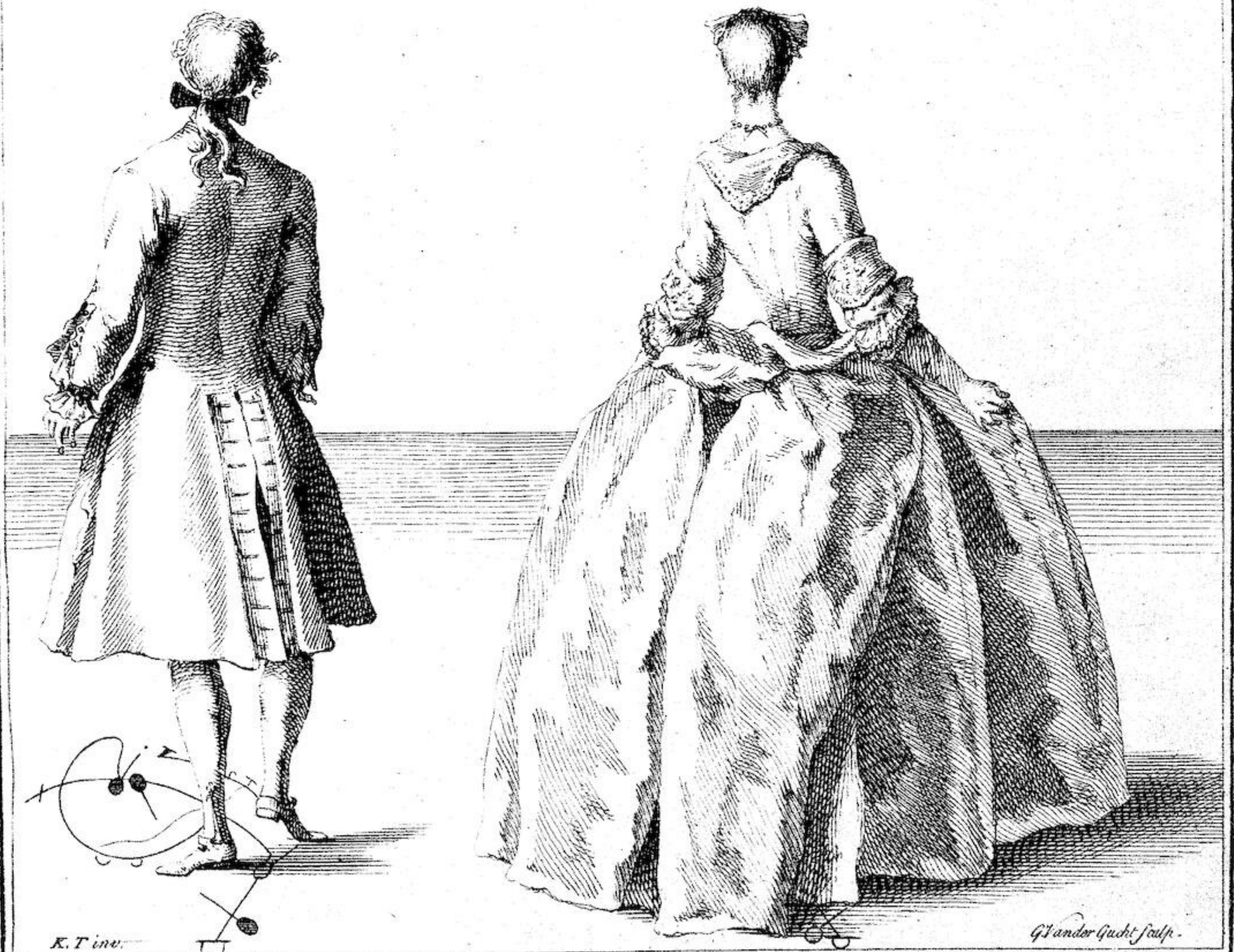
K. T. inv. &c

Arnoldus Vanhaeckhen Delin. G. King sculpsit.

To my once honoured Scholar the Right Honourable the Lady Elizabeth Heathcote,
 Daughter to the late Earl of Macclesfield, and Thomas Heathcote Esq. her Ladyships
 Eldest Son, this Plate is most humbly inscribed by her Ladyships ever obliged Servant
 Jellom Tomlinson.

The Music or Flourish to the Ceremony or first Honour.





K. T. inv.

G. Vander Gucht sculp.

To my very much respected Scholar Legh Master Junior, of Newhall in Lancashire Esq.^r and to Miss
 Elizabeth Master his Sister.
 gratefully inscribed; by their ever obliged Servant
 Kellom Tomlinson.

B. II. *The Music & Ceremony concluded.*

The Dance begins.

Minuet.

P. IV



K. T. Inv.

J. Vander Gucht Sculp.

To my Ever Honoured Scholars the Hon^{ble} Edward Aston Son and Heir to the Lord Aston, and the Hon^{ble} Miss Aston his Sister, This P. I. A. T. B. is most gratefully Incribed by their Honour's most Obliged Servant.
 Kellom Tomlinson.



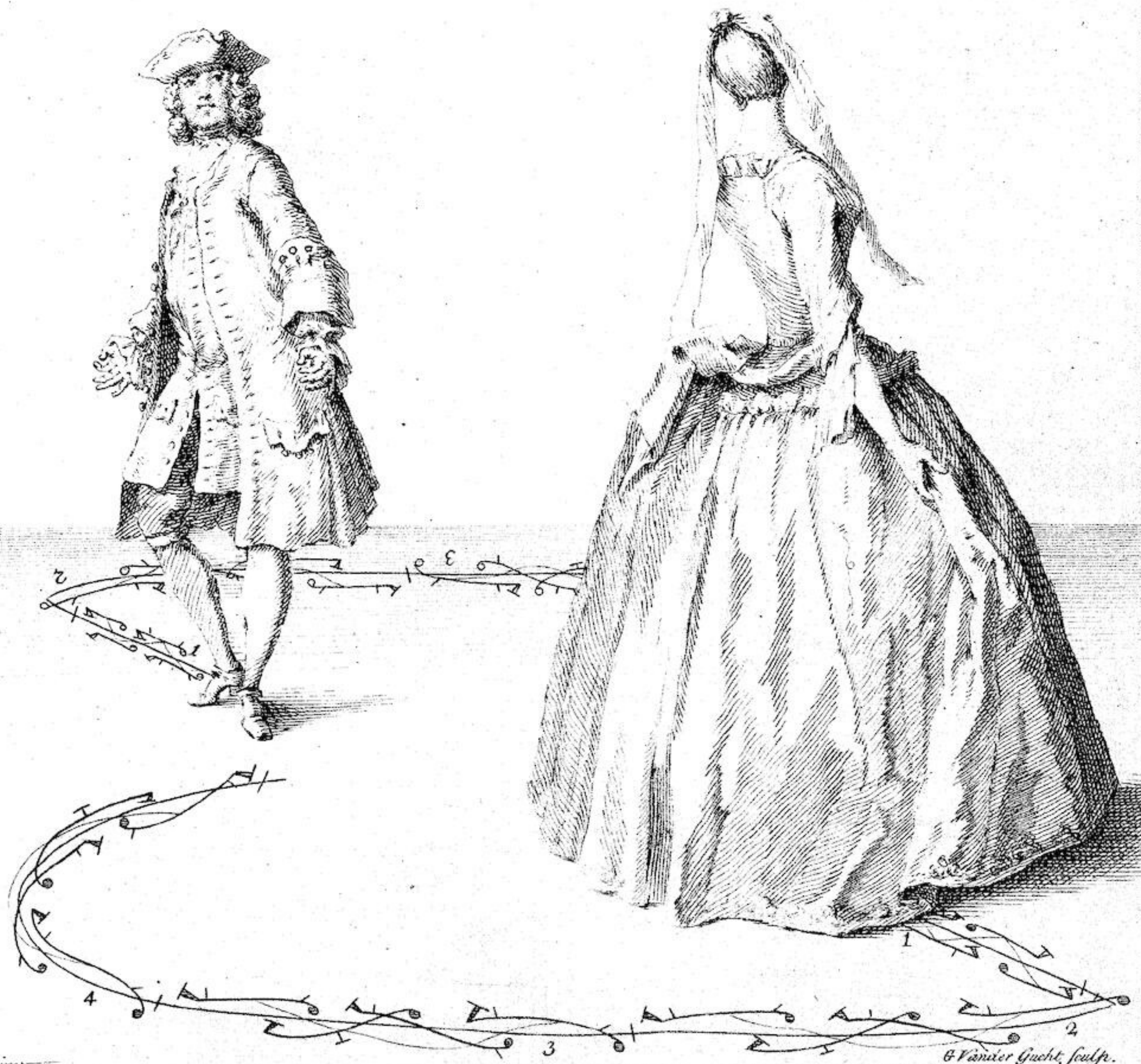
H. I. invt

G. Kneller sculp

To M^r Cotton, Son to Rowland Cotton of Etwall in the County of DERBY Esq^r and to my much respected
 Scholar Miss Catherine Cotton, his Sister, this PLATE is humbly inscribed by their most obliged Serv^t H. Tomlinson.



The under written Music is to the Steps contained in this Plate on their Repetition a Second Time between the Plates XI and XII.



K. T. inv.

G. Vander Gucht, sculp.

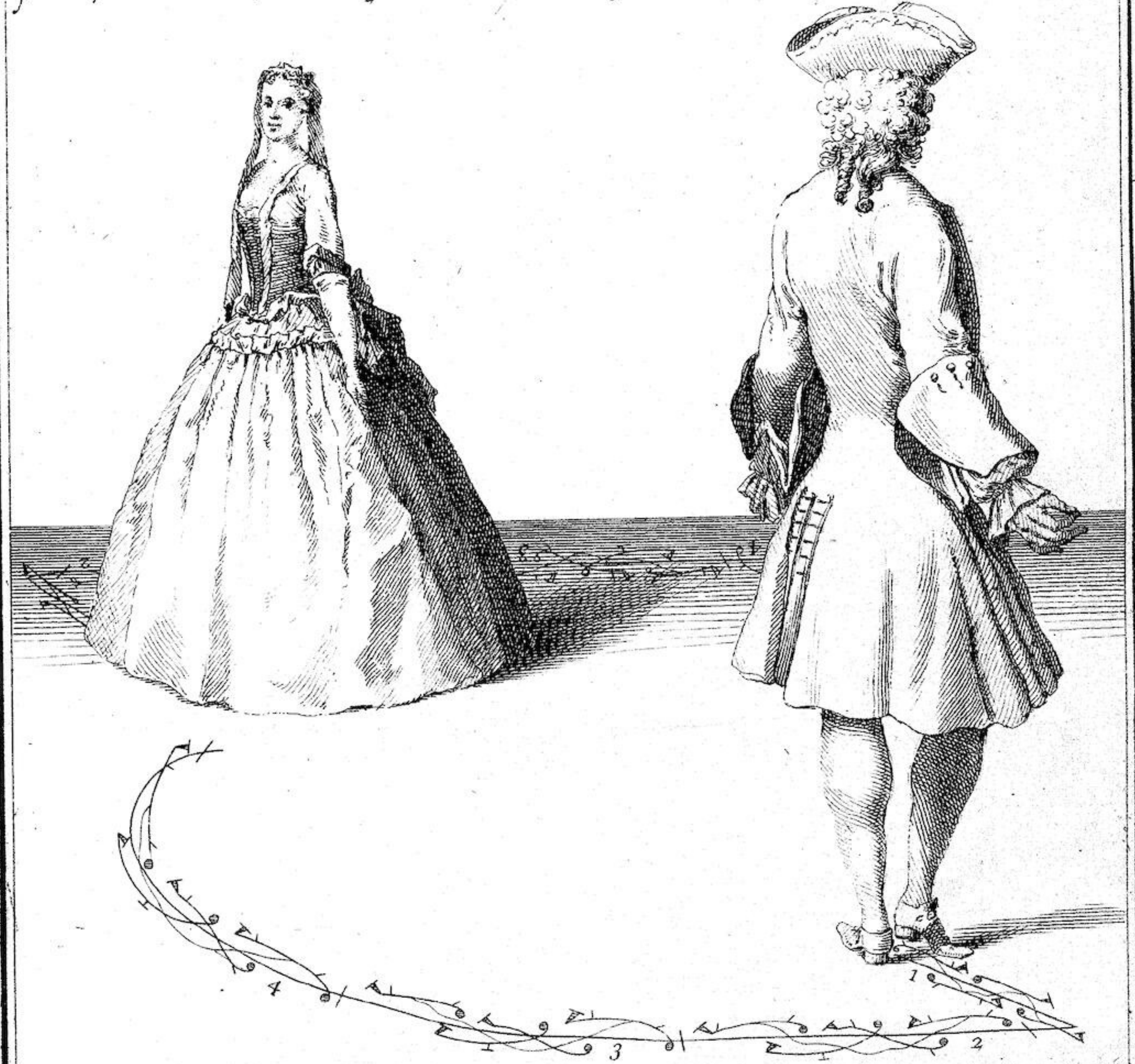
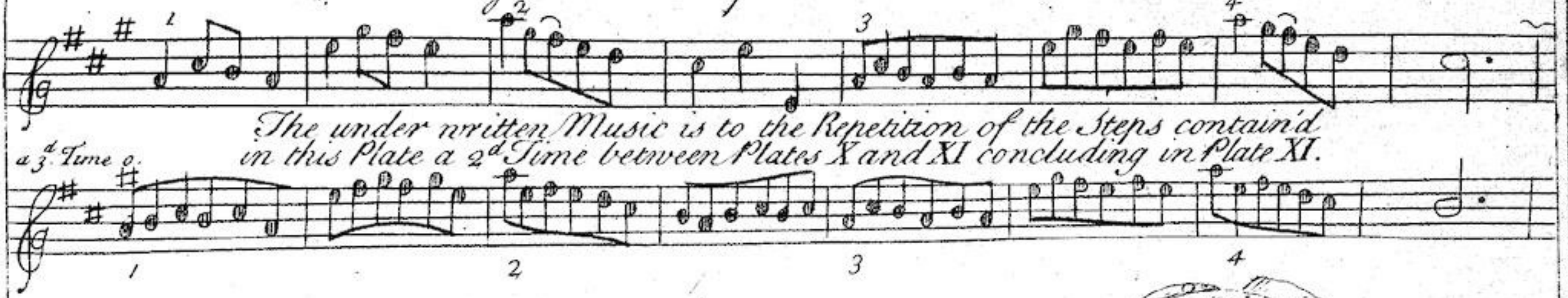
To the R^t. Hon^{ble}. Brownlow Lord Burleigh son to the Earl of Exeter, and the R^t. Hon^{ble}. the Lady Margaret Sophia Cecil his Sister, this Plate is most humbly Inscribed by, their Hon^{rs}. most oblig'd Servant *Kellom Tomlinson.*



K.T. Inv.

G. Vanderghucht sc.

To the Most Noble & Puissant Lord George Talbot, Earl of Shrewsbury & Baron Talbot in ENGLAND, & Earl of Waterford & Wexford in IRELAND; & to my much Honoured Scholar y^e Lady Mary Talbot, his Lordships Sister, This PLATE is most humbly inscribed by their obliged serv^t Kellom Tomlinson.



K.T. inv^t

To Corbet Owen of Ynysmaingynne MERIONETHSHIRE and Riwsafon MONTGOMERYSHIRE Esq.^r and my ever respected Scholar Miss Elizabeth Owen his Sister, this PLATE is gratefully inscribed by their most obliged Servant Kellom Tomlinson

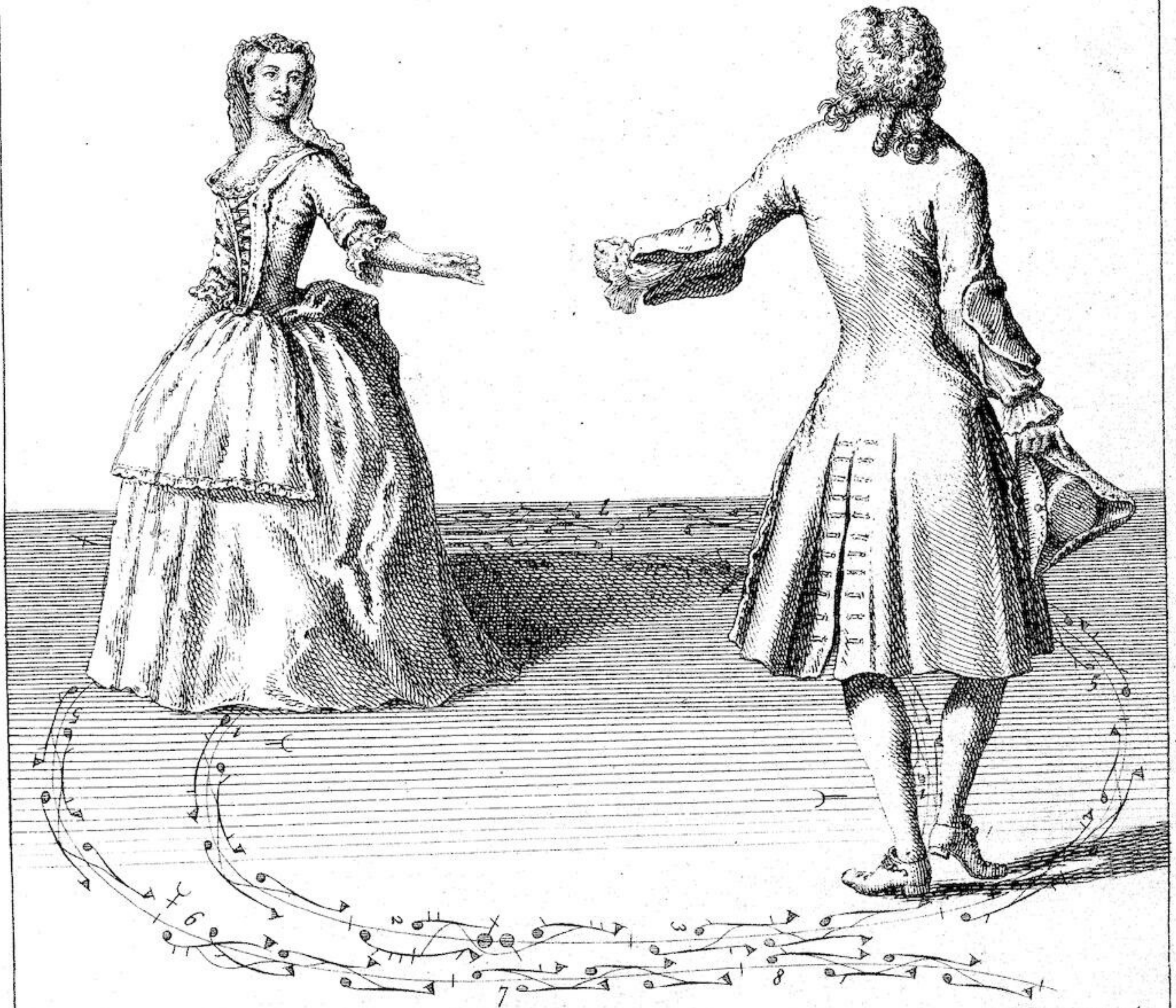
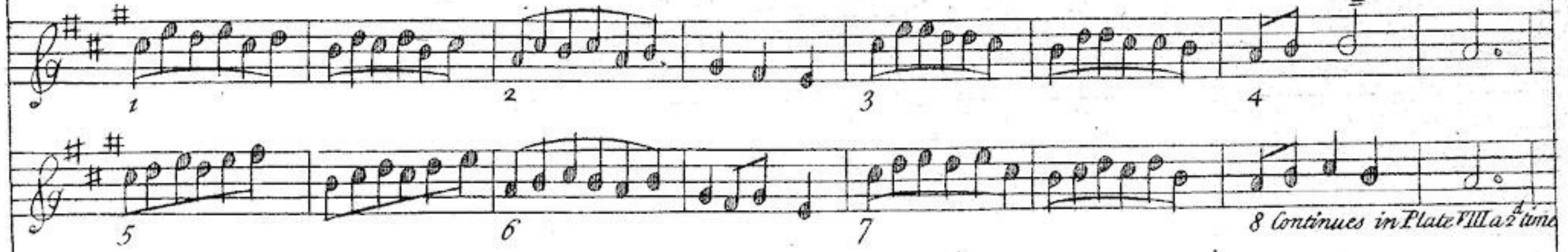


K.T. inv.

G. Vertue sculp.

To my much honoured Scholar the most Noble and Puissant Lord William Stafford Howard, Earl, Viscount and Baron of Stafford, and to the Right Honourable the Lady Mary Stafford, his Lordship's Sister, this PLATE is most humbly — inscribed by their very much obliged Serv^t Kellom Tomlinson.

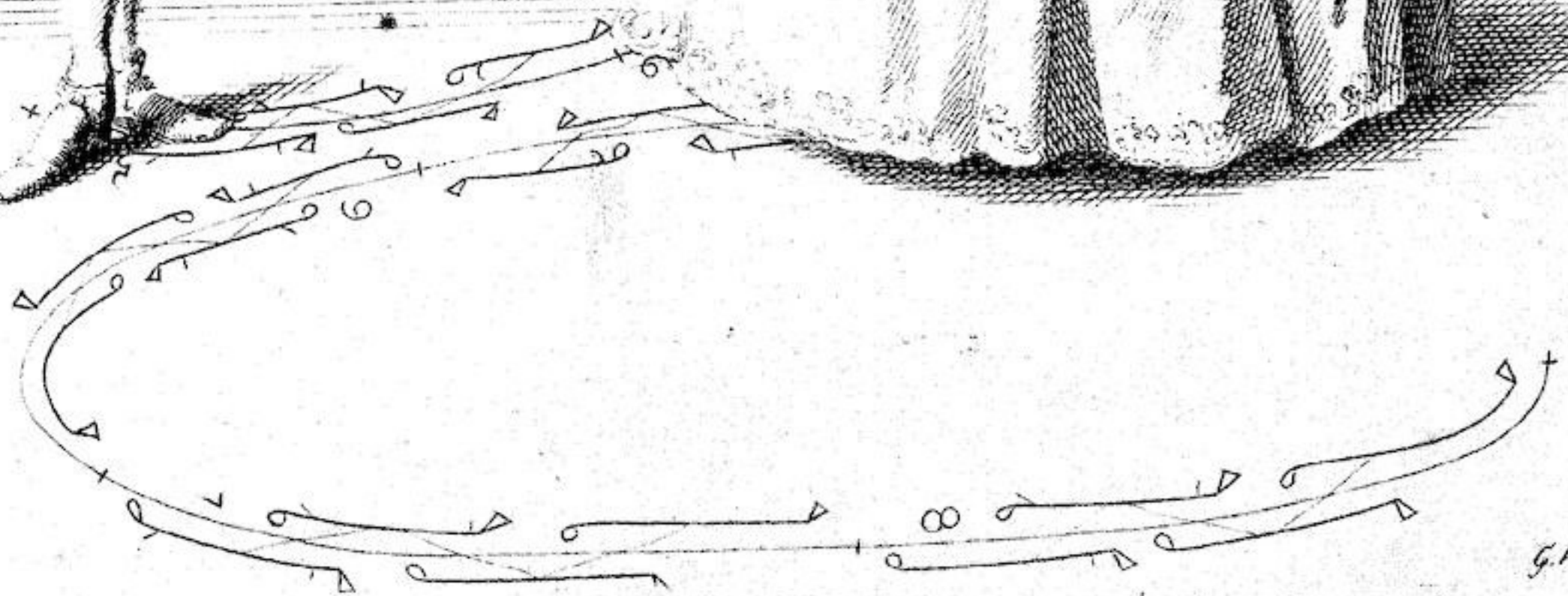
The regular Order of the Minuet continued.



H. Fletcher sculp.

K.T. Inv^t

To my once Honoured Scholars the Marquiss de Seyssel & Mademoiselle de Seyssel, Son & Daughter
 to his Excellency the Marquiss d'Aix late Envoy Extraordinary from y^e KING of SARDINIA to y^e Court of GREAT
 BRITAIN, & now Governour of MILAN. This PLATE is most humbly Inscr^{ib}d by their most oblig^d Serv^t Kellom Tomlinson.



R.C. inv.

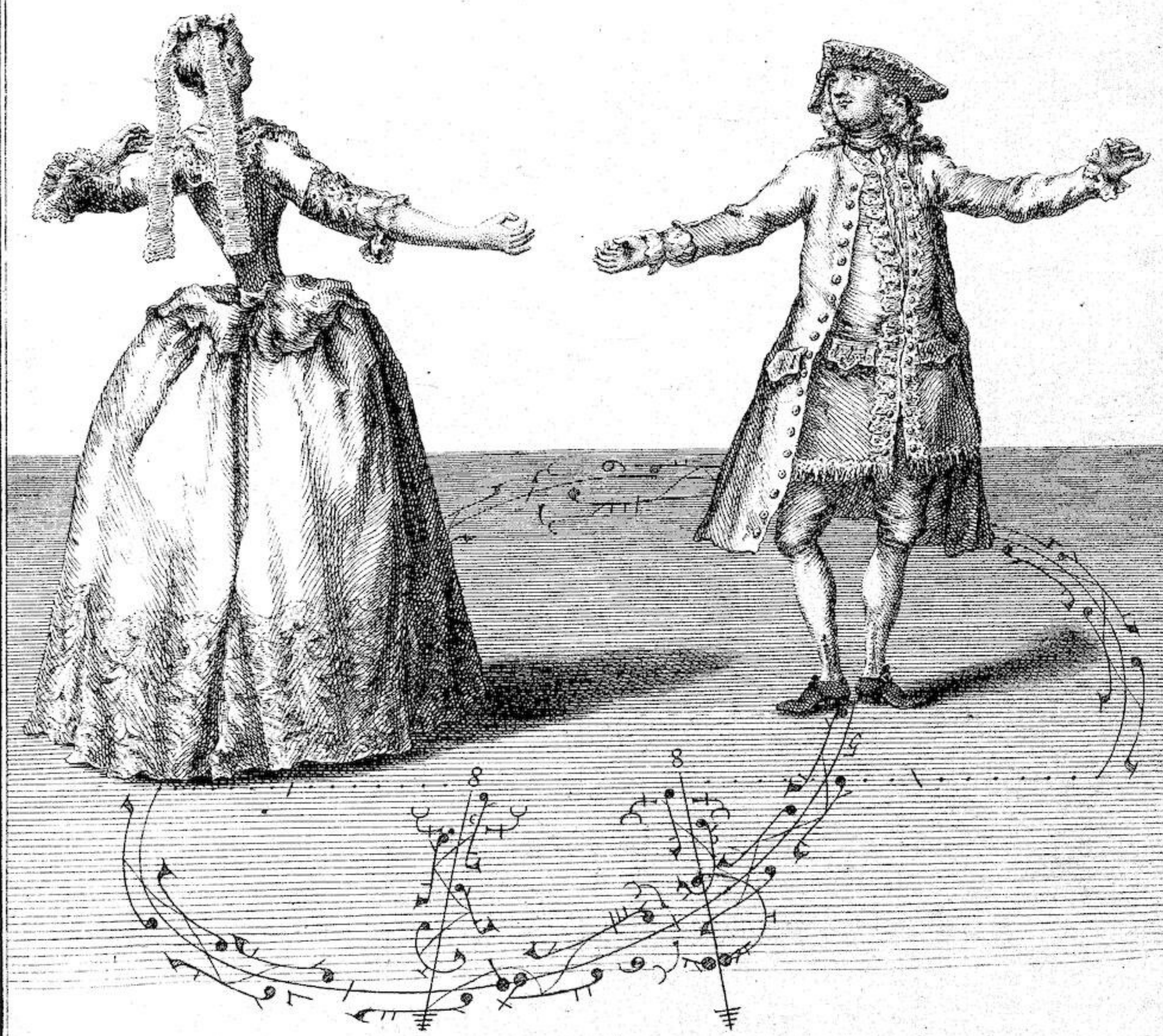
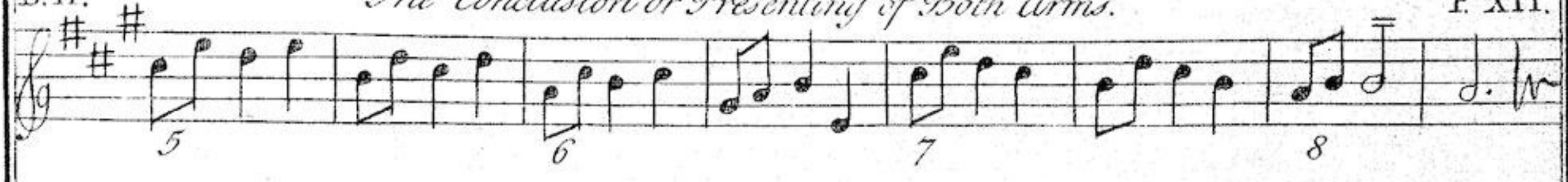
G. Vertue sculp.

To the Honourable M^r Belafye, and the Honourable Miss Belafye, Daughter to Thomas Viscount Fauconberg, and my once honoured Scholar Catherine Viscountess Fauconberg, this PLATE is most humbly inscribed by their Honours very much obliged Serv^t Willm. Tomlinson.

B. II.

The Conclusion or Presenting of Both Arms.

P. XII.



K.T. invt.

Finis.

Arnold Vanhaeckon delin. G. King sculpsit.

*To the Hon.^{ble} M.^r de Courcy and the Hon.^{ble} Miss Mary Elizabeth de Courcy Daughter to the Lord Kingsale
 this Plate is, with great Respect, inscribed by their very much obliged Servant
 Kellom Tomlinson.*