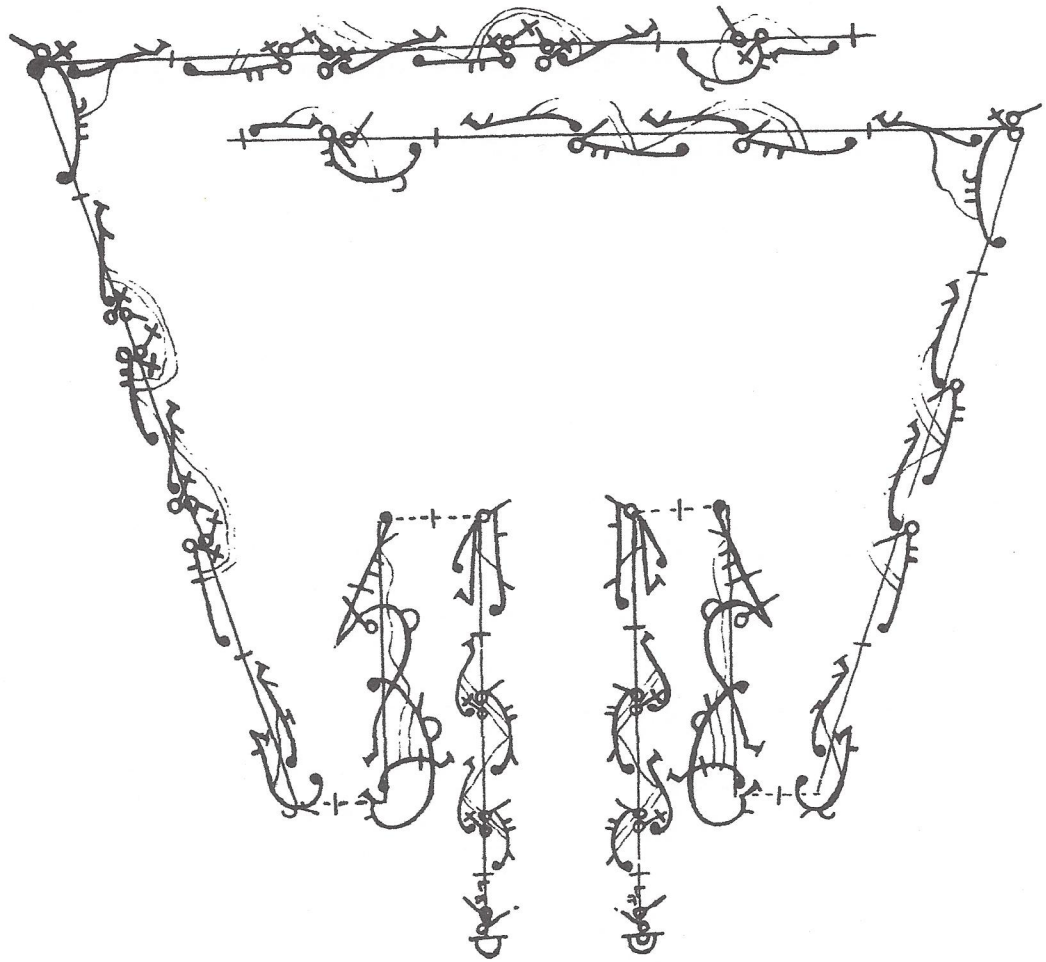


 'tune by M^r Loillet

the Dance Compos'd M^r Henelm Tomlinson writt
 by him in y^e year 1721 & twice perform'd on
 y^e Stage



47

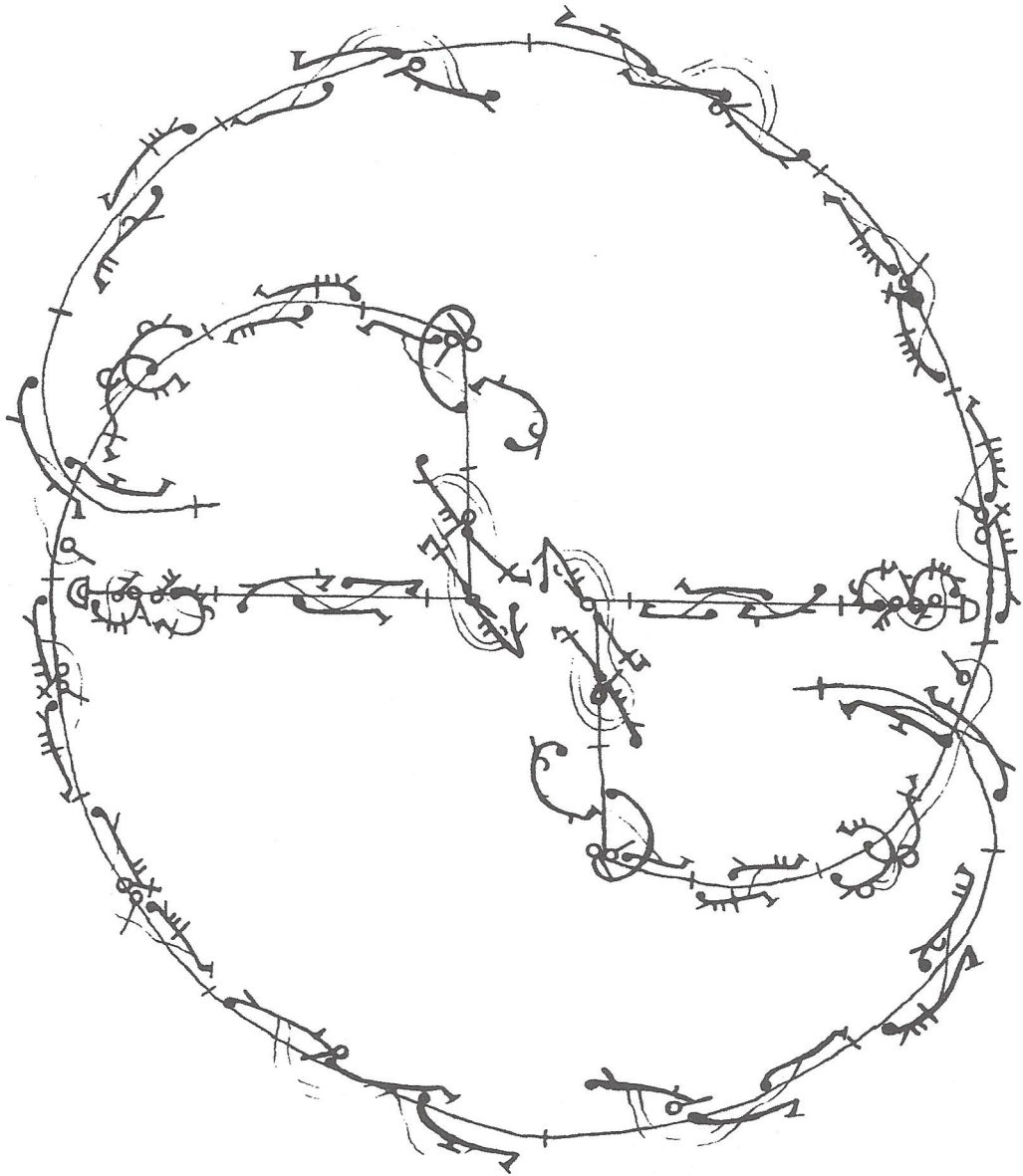
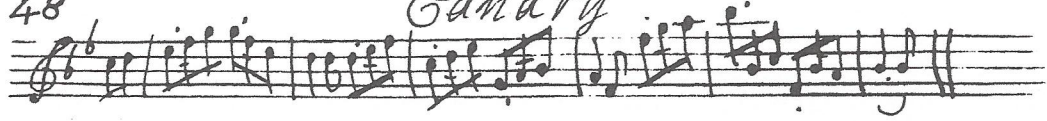


with

hp

48

Canary



62

Canary 49

A single staff of music in treble clef with a key signature of one flat (B-flat). The title "Canary" is written above the staff. The notation consists of a series of eighth and sixteenth notes, ending with a double bar line.

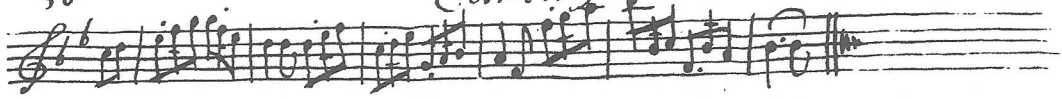
A large, decorative musical frame composed of multiple staves of handwritten notation. The frame is roughly rectangular, with the notation forming the top, bottom, and side borders. The notation is highly stylized and includes various musical symbols such as notes, rests, and clefs. The frame is centered on the page.

49

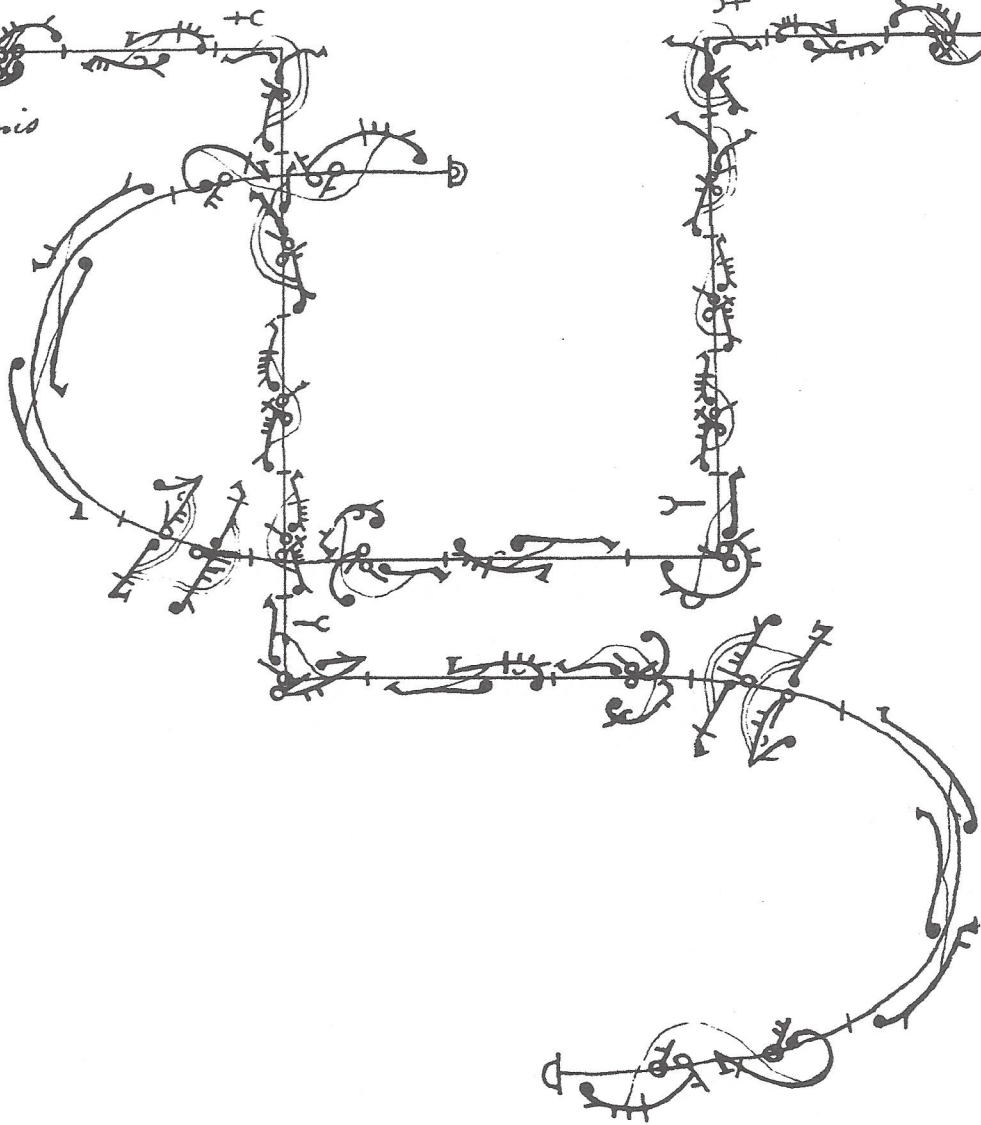


50

Canary



Finis



30

4